

CAVIUS

CARBON MONOXIDE (CO) ALARM

THE WORLD'S SMALLEST



10 YEAR
BATTERY
INCLUDED
NON-REPLACEABLE

PLEASE READ THIS USER GUIDE CAREFULLY

CAVIUS

CAVIUS Carbon Monoxide (CO) Alarm

Part Code: 4002-006

Model: 4002-001

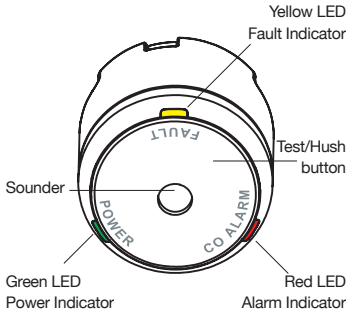
Recess Kit Part Code: 11010

**PLEASE READ THE USER
GUIDE CAREFULLY BEFORE
INSTALLATION AND RETAIN
FOR FUTURE USE.**

For large text option and maintenance guide visit

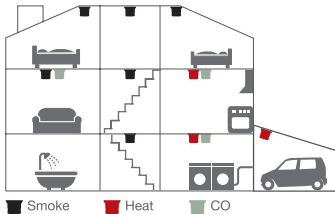
cavius.co.nz/resources

cavius.com.au/resources



The best locations in your home to install the CO alarm:

- Ideally, a CO alarm should be installed in every room containing a fuel-burning appliance.
- Near bedrooms and living areas.
- On each level of your home.
- 1-3 meters away from all fuel burning appliances.
- At eye level to allow optimum monitoring of the indicator lights.



Areas where **NOT** to install CO alarms:

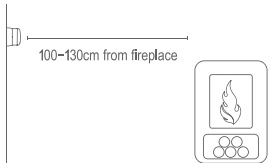
- In an enclosed space e.g. in a cupboard.
- Where it can be obstructed e.g. behind a curtain.
- Directly above a sink.
- Next to a door or window.
- Next to an extractor fan.
- Next to an air vent or other similar ventilation openings.
- In an area where the temperature may drop below -10°C or exceed 40°C .
- Where dirt and dust may block the sensor.
- In a damp or humid location.

4.

- In the immediate vicinity of a cooking appliance.

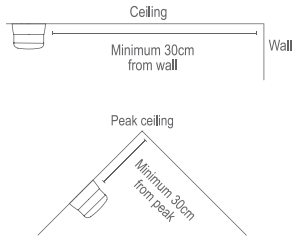
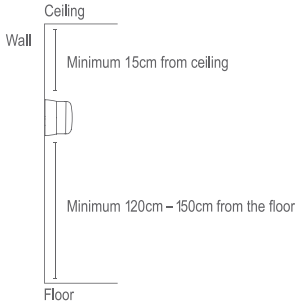
Placement:

The CO alarm is designed to be installed on the wall or a ceiling.



A CO alarm does not replace a smoke alarm.

5.

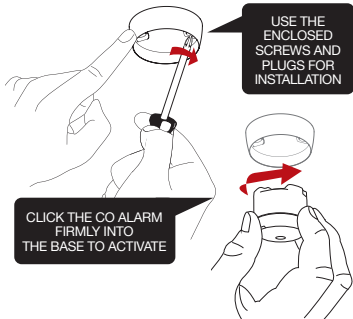
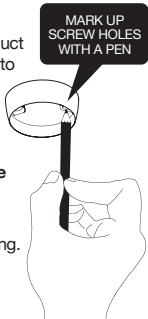


Installation of CO alarm:

Info: The label on the product must not be removed due to important information.

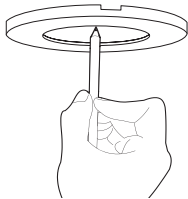
Option 1 – Standard base

1. Use the mounting base ring to mark the screw holes on the ceiling.



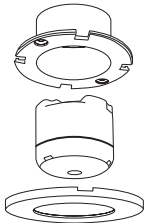
Option 2 – Recess Kit

1. Place the Cover Ring on the area where you wish to install the CO alarm, trace around the inside of the ring.




HOLE SAW
DRILL REQUIRED.
44mm - 48mm

2. Using your hole saw (44mm-48mm), cut a hole into the surface. **CAUTION:** Ensure there is no wiring or any electrical equipment behind the surface you are drilling your hole into.



INSERT RECESS KIT
MOUNTING BASE INTO
THE HOLE AND SECURE
WITH SCREWS

CLICK THE CO
ALARM FIRMLY INTO
THE BASE TO ACTIVATE

PLACE COVER RING
AROUND THE RECESS
KIT MOUNTING BASE

Hush function:

Hushing of the alarm is only possible when under a level of 200ppm. If you cannot hush the alarm, please refer to page 16 for instructions.

When the alarm is under CO alarm warning, it can be silenced for 10 minutes by pressing the hush button (which is the entire bottom of the alarm).

If a battery fault occurs, the alarm can also be silenced for up to 8 hours by a short press on the HUSH button. This function can only be carried out once during a fault.

Normal mode:

In normal mode, the POWER indicator (Green LED) will flash every 60 seconds.

Alarm mode:

When a dangerous concentration of CO is detected, the alarm will go into 'Alarm Mode'. It will be indicated by a series of repeated tones and the red LED will flash every 0.5 seconds.

Test function:

After installation and at least once per quarter, test your alarm to make sure it is operating correctly.

When the bottom button is pressed the alarm will sound, once the button is released, the alarm will conduct a self-test of the sensor and battery for approximately 9 seconds.

During this delay all three LEDs will flash in sequence. The result of the test will be indicated once the test is completed.

If the test passes, the alarm indication will be triggered for one sound sweep and the green LED will flash for 3 seconds. If the test fails, a fault indication will be given (See page 17).

After the test function is performed, the alarm will need to recover for 60 seconds before another test can be conducted (to allow the sensor chamber to resettle).

The alarm will also conduct a self-test every 24 hours, which tests for a faulty sensor, drift or short circuit.

TIP: It is safe to cover the sound output hole with your finger during the testing to minimize the sound level emitted.

What to do if the alarm sounds:

- Keep calm and open all doors and windows.
- If the alarm continues to be activated, then evacuate the premises.
- Get medical help for anyone suffering the effects of carbon monoxide poisoning.
- Call the appropriate emergency number.

Fault warnings:

Battery fault: When the battery is low the alarm will beep once every 60 seconds and the yellow LED will flash.

Sensor fault: Sensor fault is indicated by two very short beeps every 60 seconds and the yellow LED will flash. Your CO alarm will not respond to CO.

End of life: The end of sensor life is indicated by three short beeps every 60 seconds and the yellow LED will flash. Your CO alarm needs to be replaced.

Maintenance:

- Check if the alarm sounds and indicators flash properly by pressing the TEST button at least once per quarter.
- Your alarm should be cleaned once per quarter to remove dust and dirt. It can be wiped with a damp cloth. Never use detergents or other solvents to clean the unit.
- Never attempt to disassemble the unit or clean inside.
- Commonly occurring materials, vapours or gases from cleaning fluids, polishes, paints etc may affect the reliability of the alarm in the short or long term.

- When household cleaning supplies or similar contaminants are used, the area should be ventilated.
- Please do not expose to rain or moisture, do not knock or drop the detector and opening or tampering with the alarm could cause malfunction.

Other information:

Do not paint the alarm. Note the local country regulations regarding CO alarms.

Disposal: Please dispose the product properly at the end of life. This is electronic waste which should be recycled.

TECHNICAL INFORMATION:**Diameter:** 40mm **Height:** 38mm**Type of alarm:** Type B apparatus with electro-chemical CO sensor.**Battery:** Powered by a non-replaceable 3V CR123 Lithium battery with 10-year life (included).**IMPORTANT:** Do not try to replace the battery. Replace the product if the battery fails.**Product Life:** 10 years after manufacturing date.**Complies to standards:** EN50291-1:2018, EN50291-2:2010, EN50270, EN50271, EN60335, RoHs, REACH.**Working condition:** -10 to +40C, 30 to 95% non-condensing.**Storage/Transport:** -20 to +50C, 10 to 95% non-condensing.**VISUAL AND SOUND PATTERNS:**

Normal mode	Short flash green LED every 60sec	- - - -
Alarm mode	Sound sweep with red LED	/// /// ///
Test pass	1 sound sweep and green LED will flash for 3sec	///
Battery fault	1 beep every 60sec with yellow LED	- - - -
Sensor fault	2 beeps every 60sec with yellow LED	-- -- --
End of life of sensor	3 beeps every 60sec with yellow LED	-- -- -- --

INFORMATION ABOUT CARBON MONOXIDE:

General Carbon Monoxide Information:

Carbon monoxide (CO) is known as the 'silent killer' because it is odourless, tasteless and colourless. **It can kill in only a few minutes.**

All people are at risk of CO poisoning.

Unborn babies, infants and children, the elderly, people with chronic heart disease, anaemia, or respiratory problems are generally more at risk than others.

Breathing CO can cause headache, dizziness, vomiting, and nausea. If CO levels are high enough, you may become unconscious or die.

CARBON MONOXIDE (CO) ALARM

This CAVIUS carbon monoxide (CO) alarm is designed and tested to detect CO in private homes, camping trailers, mobile homes, caravans and boats. It will provide early warning of the presence of CO.



EN50291-1:2018 / EN50291-2:2010

127277 rev1

Developed & Manufactured by:

CAVIUS Aps

Julsøvej 16 - DK8600 Silkeborg

cavius.com - info@cavius.com

Manufactured in P.R.C.

Distributor information:

for New Zealand - CAVIUS Nano Ltd.

58a Poplar Lane, Papamoa 3187, NZ.

www.cavius.co.nz

for Australia - CAVIUS Australia

14/30 Octal Street, Yatala, QLD 4207, Australia.

www.cavius.com.au

Warranty:

CAVIUS provides a 10-year warranty against defect in faulty material and workmanship from the date of purchase, on all devices.

The warranty applies to reasonable and normal conditions of use only. It does not include damage as a result of misuse, incorrect installation, accidental damage, neglect, unauthorised deconstruction or dismantling and any airborne or other contamination however this may have occurred.

If this product has an acknowledged defect it must be returned to the national CAVIUS distributor at the purchasers cost with the proof of purchase.

If the product has become defective within the 10-year warranty, CAVIUS APS, Denmark will repair or replace the unit without charge and send back to the purchaser, via the national distributor at the distributors cost.

The guarantee excludes labour costs, freight costs, service costs and any incidental and consequential damages. Do not attempt to repair or service this product as this will invalidate the warranty.

CAVIUS

CARBON MONOXIDE (CO) ALARM

THE WORLD'S SMALLEST



10 YEAR
BATTERY
INCLUDED
NON-REPLACEABLE

PLEASE READ THIS USER GUIDE CAREFULLY