

CAVIUS™

WIRELESS. 
ALARM FAMILY

THE WORLD'S
SMALLEST
smoke alarms

5 YEAR
LONGLIFE BATTERY
(REPLACEABLE)

PLEASE READ THIS USER GUIDE CAREFULLY

CAVIUS™

PHOTOELECTRIC SMOKE ALARM DEVICE

Model Number: 2104-001

Developed by CAVIUS™

The smoke alarm is designed for private homes, camping trailers, mobile homes and caravans. It is not recommended for boats.

**PLEASE READ THE USER GUIDE
CAREFULLY BEFORE INSTALLATION
AND RETAIN FOR FUTURE USE.**

CONTENTS

Technical information	1
1. How to set up and connect alarms	5
2. The best areas to install the smoke alarm	10
3. Areas where NOT to install the smoke alarm	12
4. Placement	13
5. Installing the smoke alarm	15
6. Testfunction	18
7. Normal mode	20
8. Alarm mode	21
9. Pause/Hush function	22
10. Add extra device	24
11. Low battery signal	25
12. Battery replacement	26
13. Trouble shooting	27
14. Other information	28

TECHNICAL INFORMATION

The maximum number of alarms that can be interconnected within a house group are 32.

Please note: These must be alarms from the Cavius™.

WIRELESS  **ALARM FAMILY**

The distance between interconnected alarms depends on the house layout and they should always be tested after installation. It is not advised to get more than 10m distance between two alarms.

Diameter: 65mm

Height: 44mm

The alarm is powered by a replaceable 3v CR123A lithium battery. Please note that correct operation of the smoke alarm device is ensured by use of one of the following batteries: DURACELL, PANASONIC or HUIDERUI.

Interconnected by RF: 926.365 MHz

Complies to standards: AS3786:2014/AC:2008/RCM



**CHAMBER
FILTER**

TEST BUTTON

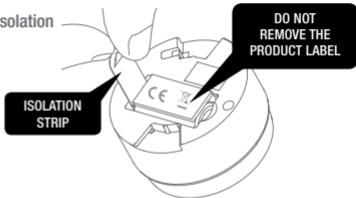
A close-up photograph of a white, cylindrical electronic device. The top portion of the device is a smooth, white plastic housing. Below this is a circular mesh filter, likely for air intake or filtration. At the bottom of the device, there is a small, circular red LED indicator. Two black callout boxes with white text point to these features. The background is a plain, light-colored surface.

**MOUNTING
BASE**

RED LED

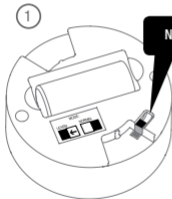
1. HOW TO SET UP AND CONNECT ALARMS:

Start by pulling out the battery isolation strip as shown.

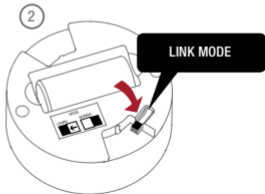


Please note: The product label must not be removed as it contains important information regarding the product.

All alarms that need to be connected in the house should be put into 'Link Mode' by sliding the switch on the back of the alarm to the 'Link Mode' position.



NORMAL MODE



LINK MODE

The red LED will light up to indicate that 'Link Mode' has been selected.



Please note that when the alarms are placed in 'Link Mode' they can't be inserted into the mounting base.

Do not take out the battery during 'Link Mode' as this will interrupt the link process.

Press the button at the top of one alarm only. This alarm will become the Master and will start sending out a specific house code to the other alarms. The red LED will flash.

1



2



As the other alarms receive the specific house code, they will also flash the LED light.



When all alarms flash the red LED, they are connected and can be switched out of 'Link Mode' and installed.

2. THE BEST AREAS TO INSTALL THE SMOKE ALARM:

- Install an alarm between possible fire sources and bedrooms as a minimum
- Install alarms on each floor of the house, in hallways and stairways
- Alarms in each room such as bedrooms and living rooms.

Additional alarms increase the security.



■ Smoke ■ Heat

3. AREAS WHERE NOT TO INSTALL SMOKE ALARMS:

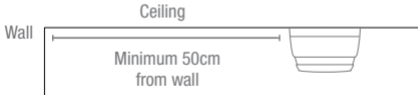
- In dusty rooms
- At the top of a high pointed ceiling, in corners of a room, and within 50cm of where a ceiling and wall join.
- In rooms where the temperature goes outside $+4^{\circ}\text{C}$ to 38°C or above 90% relative humidity not condensing.
- In kitchens, garages, laundries, or too close to fireplaces; areas where either dampness, gases or heat could occur. Place the alarm where it is reachable in order to test the battery and for maintenance.

4. PLACEMENT:

The smoke alarm is designed to be installed on a ceiling.

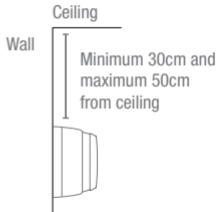
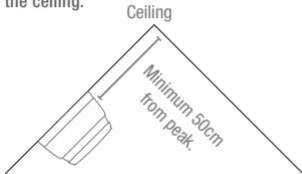
Ceiling installation:

The smoke alarm should be a minimum of 50cm from the wall.



For cathedral or peak ceiling or wall installation:

The smoke alarm should be a minimum of 30 cm and maximum of 50cm from the ceiling.

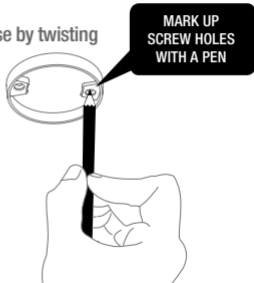


With a minimum of one smoke alarm per floor and a maximum distance between smoke alarms of 10 meters.

5. INSTALLING THE SMOKE ALARM:

Detach the alarm from the mounting base by twisting counter clockwise.

Use the mounting base ring to mark the screw holes on the ceiling or the wall.





**USE THE
ENCLOSED
SCREWS AND
PLUGS**

Once the mounting base is installed, attach the alarm by twisting clockwise until it clicks. If the battery is either missing or inserted incorrectly, or the switch is in 'Link Mode', the smoke alarm will not be able to click into the mounting base.

**CLICK THE SMOKE ALARM
FIRMLY INTO THE BASE
TO LOCK**



6. TEST FUNCTION:

After installation, and at least once per quarter, test all of your alarms to ensure they are operating correctly and are within range of each other.

It is recommended to check visually every week if the LED flashes correctly (every 48sec.)

Press the test button on any alarm for at least 6.5 seconds (count 2 sets of 3 sound sweeps). This will send out a test signal from the alarm; all other connected alarms should receive the signal within a short time. The alarms will emit a short beep and the LED will flash every 8 seconds for 2 minutes.

NOTE: Test signal will send a reduced RF signal in order to make sure it will work in normal condition.

When the test signal is sent out, the alarms will respond in two ways:

1. A single beep every 8 seconds indicates that the alarms are connected and functioning.
2. Three short beeps every 8 seconds indicates a smoke sensor fault. The alarm should be cleaned by running the vacuum (on a low setting) around the smoke alarm chamber and tested again.

Once the alarms have indicated they are interconnected; the beeps can be stopped on each alarm with a short press of the test button.

TIP: It is safe to cover the sound output hole with your finger during the testing to minimise the sound level emitted.

If any problems occur during testing, visit www.cavius.co.nz or www.cavius.com.au for further trouble shooting.

7. NORMAL MODE:

In normal mode the LED will flash every 48 seconds to show correct operation.

8. ALARM MODE:

When a concentration of smoke is detected, the smoke alarm will go into 'Alarm Mode'. It will sound the alarm signal and the LED will flash.

The smoke alarm will also transmit the alarm signal to the other connected alarms, which will also sound the alarm signal after a short delay.

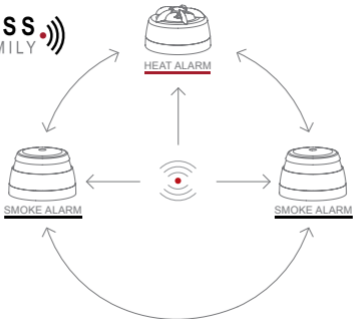
Please note that only the originating alarm's LED will flash, so it can be identified.

9. PAUSE/HUSH FUNCTION:

If the smoke alarms are to set into a false alarm by cooking, fireplace, etc. they can be paused for 10 minutes by pressing the test button on the originating smoke alarm only (indicated by the flashing LED).

The reason of this is that it is necessary to locate the source of the alarm before using the hush function. This is to make sure that it is not a life threatening situation.

WIRELESS 
ALARM FAMILY



10. ADD EXTRA DEVICE:

All CAVIUS™ interconnected alarms within the

WIRELESS 

ALARM FAMILY can be added to the system as they run on the same frequency and use the same data protocol. This means that the wireless system can consist of a combination of smoke & heat alarms.

Place all alarms into 'Link Mode' and repeat section 1.

Always test connection to all devices by repeating test function section 6 after adding devices.

11. LOW BATTERY SIGNAL:

Your product has a 5 year battery life.

When the battery is starting its end of life, a short beep will sound out every 48 seconds for 30 days.

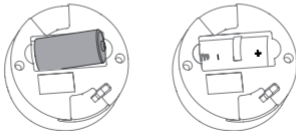
The alarm effected by the low battery will only beep, no other connected alarms will sound.

It is safe to change batteries in the alarms without going through the link process again – they will not forget the codes during the battery change process.

12. BATTERY REPLACEMENT:

To replace the battery, detach the smoke alarm from the mounting base by twisting counterclockwise.

Replace the battery respecting the polarities. Attach the alarm in the mounting base by twisting clockwise until it clicks, and test the alarm.



13. TROUBLE SHOOTING:

- If you are experiencing false alarms when no smoke is present, there could be dust particles or bugs inside the smoke chamber. To alleviate the issue; run the vacuum around the chamber with the brush attachment.
- High humidity areas can also cause false alarms, try to install smoke alarms outside of these areas. If the smoke alarm does not work when the test button is pushed, the probable cause is a faulty battery. Check if the battery is worn out and replace it.

Always test the alarm after replacement of battery.

14. OTHER INFORMATION:

Do not paint the alarm.

Disposal: For battery and product, please dispose properly at the end of life. This is electronic waste which should be recycled.

Please note local regulations about information to your insurance company regarding installed smoke alarms.



Alarm condition aural signal pattern according to ISO 8201.

Manufactured by:

CAVIUS Aps

Julsøvej 16 - DK8600 Silkeborg. www.cavius.com - info@cavius.com

Manufactured in P.R.C.

Distributor information:

CAVIUS Nano Ltd. 2G Ashley Place, Papamoa, Bay Of Plenty 3118.

P.O Box 11241, Palm Beach Plaza, Papamoa, Bay Of Plenty 3151, New Zealand.

www.cavius.co.nz - Hotline: 0800 766533 or 07 542 2191

REP ELEC.

Locked Bag 45, Plumpton, NSW 2761, Australia.

www.cavius.com.au - PH: 1 300 555 586

WARRANTY:

Your CAVIUS™ smoke alarm has a 5 year warranty from the date of purchase against defect in material and workmanship. Faulty units during this period can be returned to the place of purchase. You must provide the proof of purchase date and such defects will be repaired, or replaced at the distributors option, without charge. This Warranty only covers defects in materials or workmanship in normal residential use and does not cover damage resulting from negligent handling, misuse or lack of reasonable care. This warranty is in lieu of any other warranty either expressed or implied.

AS 3786:2014
Model Number 2104-001



126611 rev1

CAVIUS™



WIRELESS 
ALARM FAMILY